

# Improvement Science in a Minute

## Seven Steps for Making a Run Chart



Run charts are a visual tool used to assist in the interpretation of time series data. Run charts can be distinguished from simple line graphs by the presence of a median line. The primary reason improvement teams use run charts is to help answer the fundamental improvement question, “How will we know that a change is an improvement?”

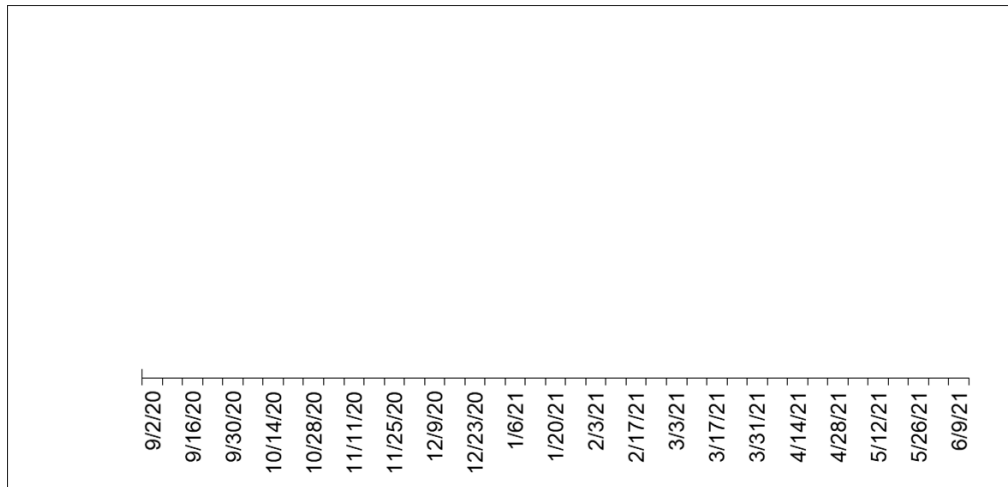
1

**Form a learning question that is best answered using data over time.**

*Example learning question: What percentage of enrolled students are attending our early learning centers each week?*

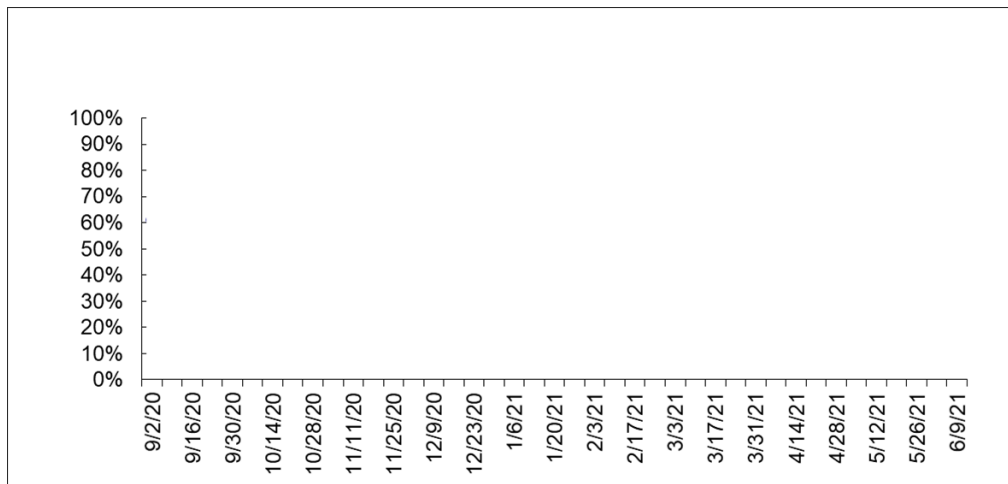
2

**Develop the scale for the x-axis:**



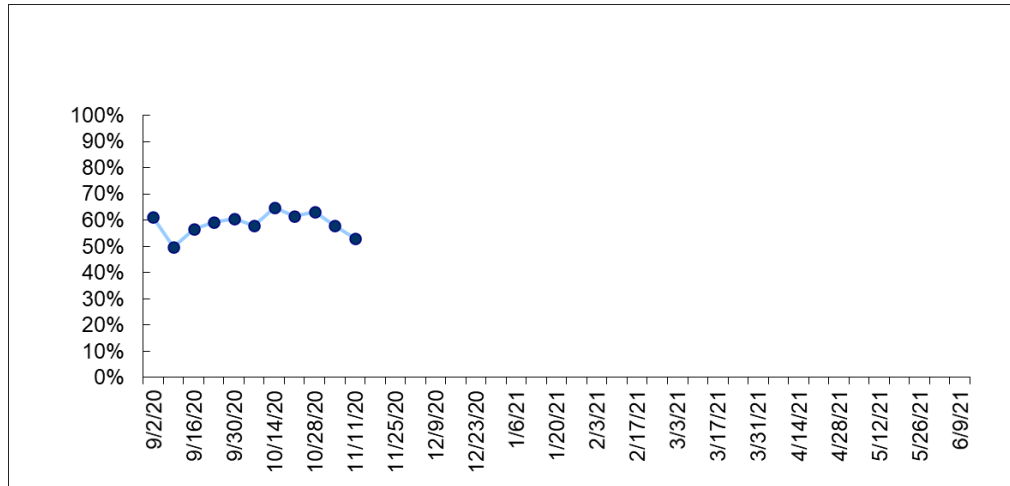
3

**Develop the scale for the y-axis:**



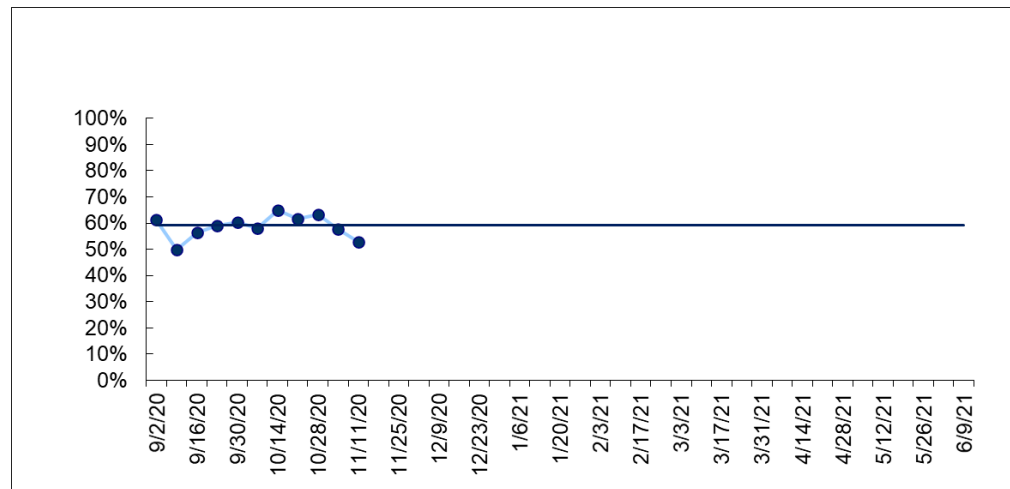
4

### Plot the data values:



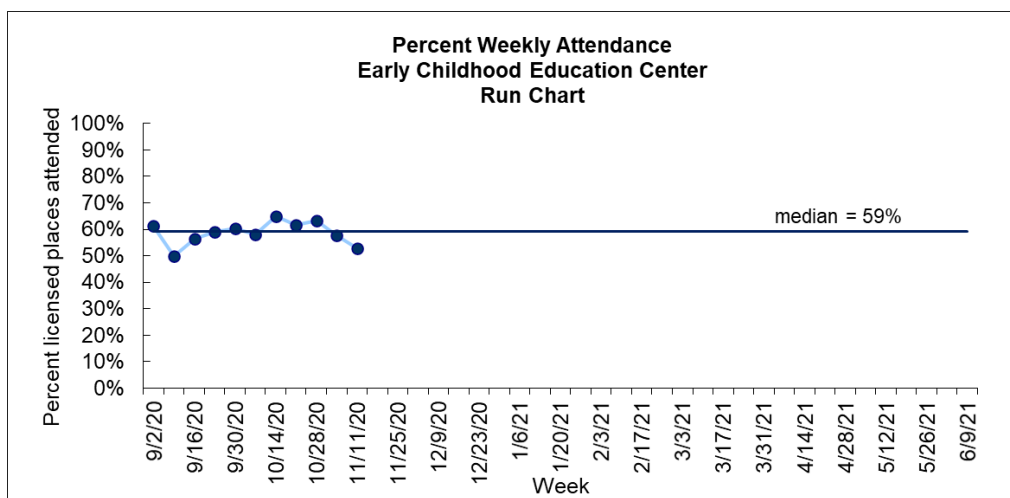
5

### Calculate and place the median:



6

### Label the Run Chart:



7

### Annotate the run chart with additional information:

